

Dentsply Sirona does not waive any right to its trademarks by not using the symbols "®" or "™". 32671114-USX-1610 © 2016 Dentsply Sirona. All rights reserved.

Astra Tech Implant System®

## Our world is not flat

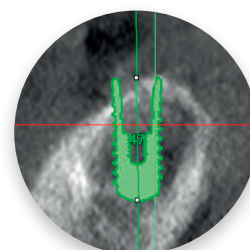
Neither is the anatomy of your implant patients

Your world is already full of clinical challenges so why work harder because of conventional thinking? Instead of augmenting sloped ridges to accommodate flat-top implants, it's time to discover a simpler solution by using an implant that follows the bone. Because sloped-ridge situations call for anatomically designed sloped implants.

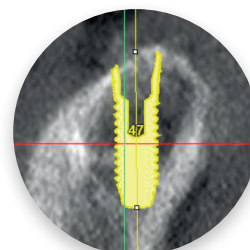
**OsseoSpeed® Profile EV** – It's time to challenge conventional thinking



[www.profiledentalimplants.com](http://www.profiledentalimplants.com)



Conventional vs  
innovative approach



 **Dentsply  
Sirona**  
Implants